

V

Standard/Low Power Solenoid Valve (2/2)



1

V221



Product Features

- * Various voltages and working styles are available.
- * Different surface treatment, thread types (G,PT,NPT) are available.

How to Order?

Low Power Solenoid Valve

Series No.	ID Code	Positions	Ways	Controls	Port Size	Voltage	Connection Mode	Cover Color	Patchcord	Thread Type
N	M: Standard armature +Energy saving coil	2 positions	2:2 ways	1: Single control	06: 1/8 " 08: 1/4 "	E1 : AC110V E2: AC220V E4: DC24V	Blank: DIN connector type L: Plug-in Type	Blank: Brown translucent J: Colorless and translucent	Blank: Patchcord length is 0.3 meter 0.6M: Patchcord length is 0.6 meter 1M: Patchcord length is 1 meter (Options for "L: Plug-in type" Only)	Blank: G P: PT T: NPT

Standard Solenoid Valve

Series No.	Positions	Ways	Controls	Port Size	Voltage	Connection Mode	Cover Color	Patchcord	Thread Type
V	2 positions	2:2 ways	1: Single control	06: 1/8 " 08: 1/4 "		Blank: DIN connector F: Flying leads L: Plug-in Type	Blank: Brown translucent J: Colorless and translucent	Blank: Patchcord length is 0.3 meter 0.6M: Patchcord length is 0.6 meter 1M: Patchcord length is 1 meter (Options for "L: Plug-in type" and "F: Flying leads type" Only)	Blank: G P: PT T: NPT

E1: AC110V	E6: AC36V
E2: AC220V	E7: AC24V
E3: AC380V	E8: DC110V
E4: DC24V	E9: DC48V
E5: DC12V	E10: DC36V

Order Example:

V series directional valve, 2/2 way, single control, 1/8 port size, AC110V, DIN connector, G thread, the ERP code is: V221-06E1

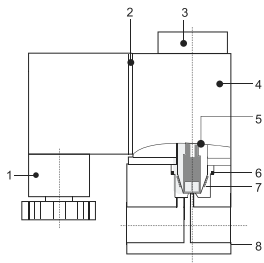
Specifications

Model No.	NM221-06	NM221-08	V221-06	V221-08
Working medium	Air, water, oil			
Acting type	Direct acting			
Orifice (mm)	2			
Port size	1/8	1/4	1/8	1/4
Lubrication	Not required			
Working pressure (MPa)	0~0.8			
Guaranteed pressure (MPa)	1.2			
Working temperature (°C)	-5~60(No freezing)			
Voltage range	-15% ~ +10%			
Power consumption	AC:1VA	DC:0.9W	AC : 5VA	DC : 4.8W
Insulation class	Class F			
Protective class	IP65 (DIN40050)			
Activate time (s)	<0.05			
Seal material	NBR			
Weight (g)	141	138	141	138

V Series Standard/Low Power Solenoid Valve (2/2 way)

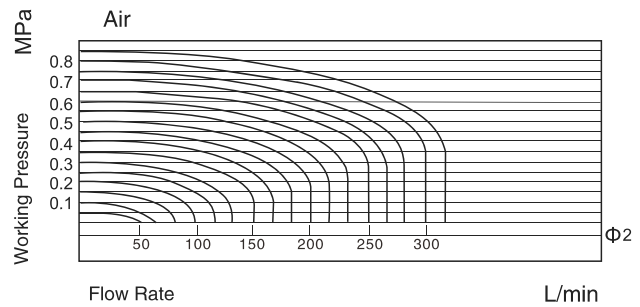


Internal Structure



No	Designation
1	Connector
2	Connector washer
3	Nut
4	Coil
5	Pilot units
6	O-ring
7	Spring
8	Valve body

Flow Chart

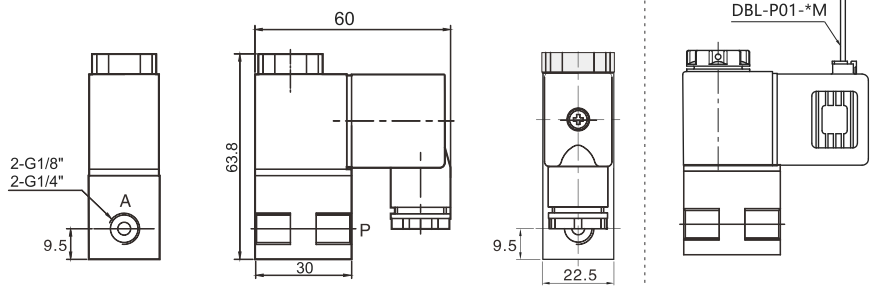


Main Parts Material

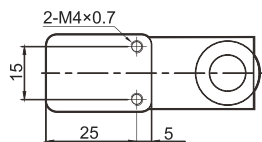
Part name	Material
Valve body	Aluminum alloy
Connector	Engineered plastics
Connector washer	NBR (FPM)
Pilot units	Pure steel+Cu+Stainless steel
Diaphragm	NBR
Nut	POM+Carbon steel
Coil	Brass Wire covered with heat resistance colophony

Main Dimension

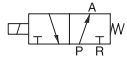
V221-06/08



(If with the steel nut, the height is 60.7mm)



V321



VP321-06

How to Order?

Low power solenoid valve

Series No.	Valve body ID code	ID Code	Positions	Ways	Controls	Port size	Voltage	Connection mode	Cover color	Thread type
N		M: Standard armature +Low power coil	2:2 positions	3:3 ways	1: Single control	M5: M5 06: 1/8"	E1 : AC110V E2: AC220V E4: DC24V	Blank: DIN connector F: Flying leads	Blank: Brown translucent J: Colorless and translucent	Blank: G P: PT T: NPT

Standard solenoid valve

Series No.	Ways	Positions	Controls	Port size	ID Code	Voltage	Connection mode	Cover color	Thread type
V VP	3:3 ways	2:2 positions	1: Single control	V321 M5: M5 06: 1/8" VP321 06: 1/8"	Blank: standard type A: Amisco coil	E1: AC110V E2: AC220V E3: AC380V E4: DC24V E5: DC12V E6: AC36V E7: AC24V E8: DC110V E9: DC48V E10: DC36V	Blank: DIN connector F: Flying leads	Blank: Brown translucent J: Colorless and translucent	Blank: G P: PT T: NPT

Order Example:

N series solenoid valve, standard pilot+Low power coil, 3/2 way, single control, 1/8" port size, standard coil, DC24V, DIN connector, G thread, ERP code is: NM231-06E4

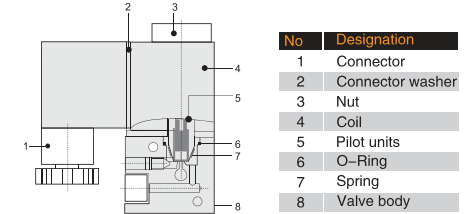
Specifications

Model No.	NM231-M5	NM231-06	NM231-06P	V321-M5	V321-06	VP321-06
Working medium	Clean air (After 40 μm filtration)					
Acting type	Direct acting					
Orifice (mm)	1.2					
Port size	M5	1/8		M5		1/8
Lubrication	Not required					
Working pressure (MPa)	0-0.8					
Guaranteed pressure (MPa)	1.2					
Working temperature (°C)	-5-60					
Voltage range	-15% ~ +10%					
Power consumption	AC:1VA DC:0.9W			AC:5VA DC:4.8V		AC:7VA DC:6.5V
Insulation class	Class F					
Protective class	IP65 (DIN40050)					
Max. acting frequency	10 cycles/s					
Seal material	NBR					
Activate time	Below 0.05 Sec.					
Weight (g)	141		138		141	138

Product Features

- * Various voltages and working styles are available.
- * Different surface treatment, thread types (G,PT,NPT) are available.

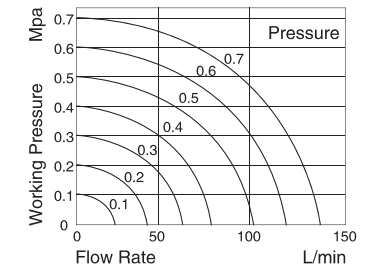
Internal structure



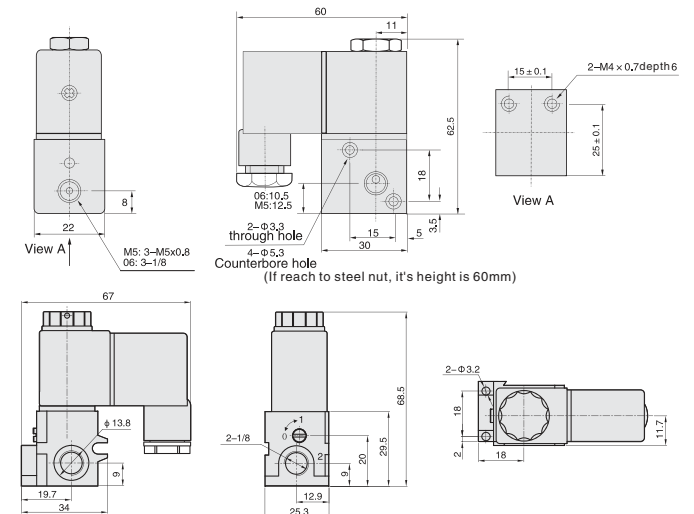
Main Parts Material

Part name	Material
Valve body	Aluminum alloy
Connector	Engineering plastic
Connector washer	NBR
Pilot units	Pure steel+Cu+Stainless steel
Diaphragm	NBR
Nut	POM+Carbon steel
Coil	Brass Wire covered with heat resistance colophony

Flow Chart



Main Dimension



V321-M5/06
NM231-M5/06

VP321-06
NPM231-06