

## R series hand pull valve

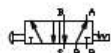


### Graphic Symbol

Hand pull valve  
(3/2 way)



Hand pull valve  
(5/2 way)



### Product Features

- The hand pull valve uses a manual way to directly control the opening and closing of the spool, and does not rely on external energy sources (such as electricity, air pressure, etc.) to work;
- Due to its relatively simple structure, the hand pull valve can still work normally in the case of no power supply or control system failure, with high reliability and self-locking;
- Hand pull valve internal parts less, less affected by environmental factors, maintenance is relatively simple, long service life;
- The cost of hand pull valve is relatively low, easy to install, the technical requirements of the operator is not high, so it is widely used in many industrial fields and civil facilities.

### How to order

Series code and working position and part	Valve body size	Function code	Nozzle diameter	Thread type
3R: 3/2way 4R: 5/2way	1: Series 1 2: Series 2 3: Series 3 4: Series 4	10: two-position	Series 1 06:1/8" Series 2 06:1/8" 08:1/4" Series 3 08:1/4" 10:3/8" Series 4 15:1/2"	Blank: G P: PT T: NPT

### Ordering example:

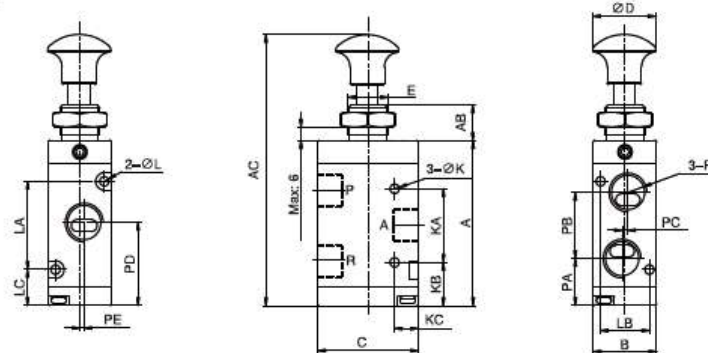
R series hand pull valve, 3/2way, 3 series body, nozzle diameter 1/4, G thread, its ERP code is 3R310-08.

### Specification

Model number	R series hand pull valve
Working medium	Clean air(After 40 μm filtration)
Acting type	External control
Lubrication	unnecessary
Working pressure(Mpa)	0-0.8
Maximum pressure(Mpa)	1.2
Working temperature(°C)	-20-70

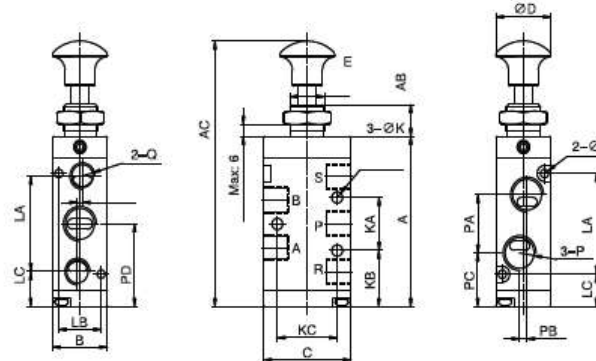
### Main Dimension

#### 3R Series



Model/Code	A	AB	AC	B	D	C	E	K	KA	KB	KC	L	LA	LB	LC	P	PA	PB	PC	PD	PE
3R110-06	49	10	79	18	22	27	M12x1	3,2	21	12	7,5	3,2	19	13	13	1/8	14,5	16	2	22,5	1
3R210-06	56,5	11,8	87,5	22	22	35	M14x1	4,2	25	15	8,2	3,2	30	17	12,5	1/8	16,5	22	0	27,5	0
3R210-08	56,5	11,8	87,5	22	22	35	M14x1	4,2	25	15	8,2	3,2	30	17	12,5	1/4	16,25	22,5	0	26,5	1,5
3R310-08	65,5	11,8	100	27	22	40	M16x1	4,2	30	17,5	10,25	4,2	35	20	15	1/4	20,5	24	0	32,5	0
3R310-10	65,5	11,8	100	27	22	40	M16x1	4,2	30	17,5	10,25	4,2	35	20	15	3/8	20,5	24	0	32,5	2
3R410-15	81,5	15,8	120	34	22	50	M22x1,5	5,2	50	15,5	13,75	4,2	43	27	19	1/2	22,5	36	0	40,5	3

#### 4R Series



Model/Code	A	AB	AC	B	C	D	E	K	KA	KB	KC	L	LA	LB	LC	P	PA	PB	PC	PD	Q	QA	QB	QC
4R110-06	60	10	88,5	18	27	22	M12x1	3,2	14	21	19	3,2	30	13	13	1/8	16	3	20	28	1/8	28	1,5	14
4R210-06	64,5	11,8	95,5	22	35	22	M14x1	4,2	20	21,5	23,5	3,2	38	17	12,5	1/8	18	0	22,5	31,5	1/8	36	0	13,5
4R210-08	64,5	11,8	95,5	22	35	22	M14x1	4,2	20	21,5	23,5	3,2	38	17	12,5	1/4	21	3	21	31,5	1/8	36	0	13,5
4R310-08	80	11,8	116	27	40	22	M16x1	4,2	24	28	27,5	4,2	50	20	15	1/4	22	0	29	40	1/4	45	0	17,5
4R310-10	80	11,8	116	27	40	22	M16x1	4,2	24	28	27,5	4,2	50	20	15	3/8	24	4	28	40	1/4	45	0	17,5
4R410-15	110	15,8	149,8	34	50	22	M22x1,5	5,2	28	41	33	4,2	72	27	19	1/2	36	4	37	55	1/2	63	0	23,5