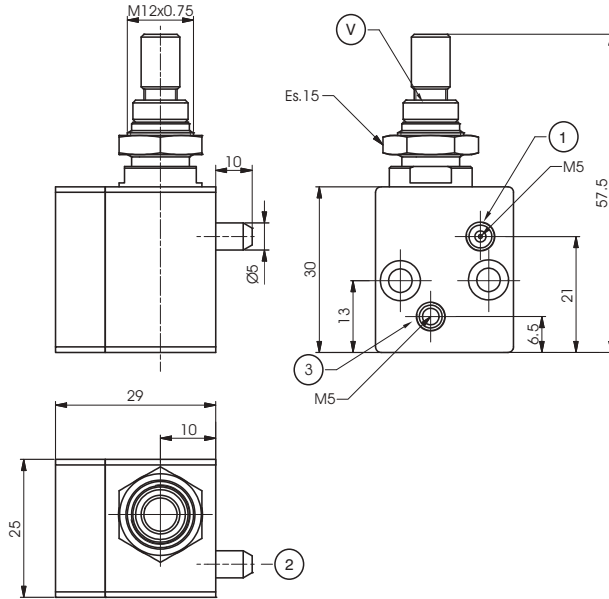


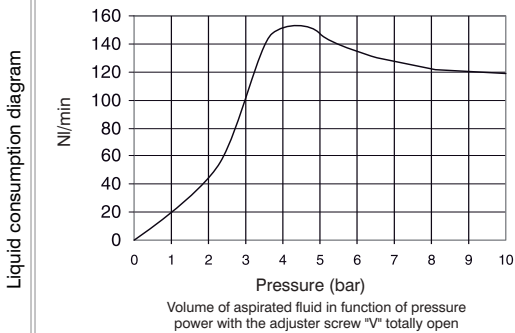
Spry valves



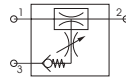
Ordering code

6.13.00

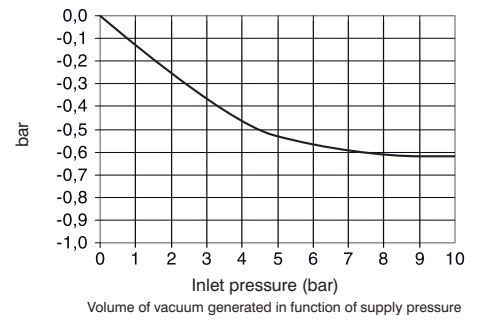
Supply air : Connection 1
Output (air and nebulized liquid) : Connection 2
Supply liquid : Connection 3



Pneumatics symbol



Vacuum diagram



Operational characteristic

- This valve, is based on the Venturi principle, and it is used to spray and nebulize a liquid.
- Useful in all applications where is needed a continuous lubrication and / or refrigeration.
- Incoming air (connection 1) sucks the liquid through the venturi principle (connection 3) to obtain a continuous spray output (connection 2).

Technical characteristic

Fluid	Filtered and lubricated air
Liquid	Water and oil (Liquid viscosity 3°E-5°E)
Working pressure	3 - 10 bar
Operating temperature	-5°C - +70°C
Weight	85gr.