

## Резьбовые фитинги из никелированной латуни 100



**РАБОЧЕЕ ДАВЛЕНИЕ - 0,9...60 бар**

**ТЕМПЕРАТУРА ЭКСПЛУАТАЦИИ от -20° до +100 °С**

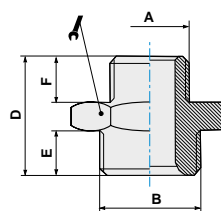
Латунные фитинги резьбовые серии 100 STANDART предназначены для соединения различных элементов имеющих резьбу. Могут использоваться для сжатого воздуха, жидкости, вакуума. Присоединение и разъединение латунными резьбовыми фитингами повторяется многократно с использованием инструментов и герметизирующих материалов.

Присоединение латунных фитингов: резьба метрическая M5 и трубная цилиндрическая G1/8"...1" по ISO 228 (BSP) и коническая R1/8"...1" по ISO 7 (BSPT).



### Арт. 101

Код	A	B	D	E	F		
101M5M5	M5	M5	11,5	4	4	8	100
101M518	M5	G1/8	14,5	6	4	14	100
1011818	G1/8	G1/8	16,5	6	6	14	100
1011814	G1/8	G1/4	19,0	8	6	17	100
1011838	G1/8	G3/8	20,0	9	6	19	100
1011414	G1/4	G1/4	21,0	8	8	17	100
1011438	G1/4	G3/8	22,0	9	8	19	100
1011412	G1/4	G1/2	23,5	10	8	24	100
1013838	G3/8	G3/8	23,0	9	9	19	50
1013812	G3/8	G1/2	24,5	10	9	24	50
1011212	G1/2	G1/2	25,5	10	10	24	50
1011234	G1/2	G3/4	27,5	11	10	30	25
1013434	G3/4	G3/4	28,5	11	11	30	25

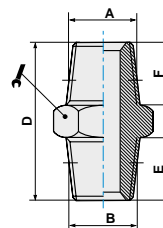
Резьба M и G




### Арт. 102

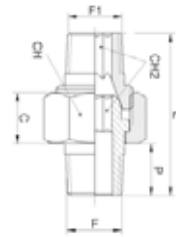
Код	A	B	D	E	F		
1021818	R1/8	R1/8	20,0	8,0	8,0	12	100
1021814	R1/8	R1/4	24,0	11,0	8,0	14	100
1021838	R1/8	R3/8	24,5	11,5	8,0	17	100
1021812	R1/8	R1/2	27,5	14,0	8,0	22	50
1021414	R1/4	R1/4	27,0	11,0	11,0	14	100
1021438	R1/4	R3/8	27,5	11,5	11,0	17	100
1021412	R1/4	R1/2	30,5	14,0	11,0	22	50
1023838	R3/8	R3/8	28,0	11,5	11,5	17	100
1023812	R3/8	R1/2	31,0	14,0	11,5	22	50
1021212	R1/2	R1/2	33,5	14,0	14,0	22	50
1021234	R1/2	R3/4	37,5	16,5	14,0	27	25
1023434	R3/4	R3/4	40,0	16,5	16,5	27	25
1023401	R3/4	R1'	42,5	19,0	16,5	34	10
1020101	R1'	R1'	45,0	19,0	19,0	34	10

Резьба R





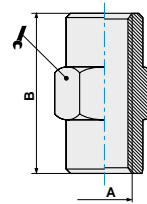
**Арт. 102P3**

Код	F	F1	CH	CH2	P	L	C	Gr	
10218P3	1/8	1/8	15	5	9,0	27,0	8,6	18,5	50
10214P3	1/4	1/4	19	6	11,5	33,5	9,6	36,0	50
10238P3	3/8	3/8	22	8	13,0	36,0	10,0	66,0	50
10212P3	1/2	1/2	27	12	15,5	45,0	12,0	88,0	25
10234P3	3/4	3/4	36	14	18,0	53,0	17,0	200,0	25
10201P3	1"	1"	46	19	22,0	64,0	20,0	360,0	5
1021814P3	1/8	1/4	15	5	9,0	30,0	8,5	24,0	50
1021438P3	1/4	3/8	19	6	11,5	36,0	9,5	45,5	50
1023812P3	3/8	1/2	22	8	13,0	39,0	10,0	76,0	25





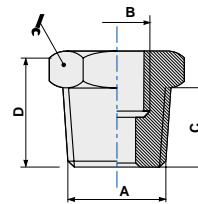
**Арт. 103**

Код	A	B		
103M5	M5	11	8	100
10318	G1/8	15	14	100
10314	G1/4	22	17	100
10338	G3/8	23	22	50
10312	G1/2	30	26	25
10334	G3/4	32	32	10





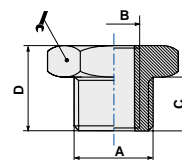
**Арт. 104**

Код	A	B	C	D		
1041418	R1/4	G1/8	11,0	16,0	14	100
1043818	R3/8	G1/8	11,5	16,5	17	100
1041218	R1/2	G1/8	14,0	19,5	22	50
1043814	R3/8	G1/4	11,5	16,5	17	100
1041214	R1/2	G1/4	14,0	19,5	22	50
1041238	R1/2	G3/8	14,0	19,5	22	50
1043412	R3/4	G1/2	16,5	23,0	27	25
1043438	R3/4	G3/8	16,5	23,0	27	10
1040112	R1"	G1/2	17,0	25,0	34	10
1040134	R1"	G3/4	17,0	25,0	34	10





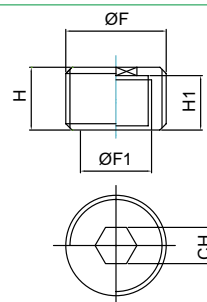
**Арт. 104Z**

Код	A	B	C	D		
104Z18M5	G1/8	M5	6,0	10,5	14	100
104Z1418	G1/4	G1/8	8,0	13,0	17	100
104Z3818	G3/8	G1/8	9,0	14,0	19	100
104Z3814	G3/8	G1/4	9,0	14,0	19	100
104Z1218	G1/2	G1/8	10,0	15,5	24	50
104Z1214	G1/2	G1/4	10,0	15,5	24	50
104Z1238	G1/2	G3/8	10,0	15,5	24	50
104Z3412	G3/4	G1/2	12,5	18,0	30	25
104Z3438	G3/4	G3/8	12,5	18,0	30	10



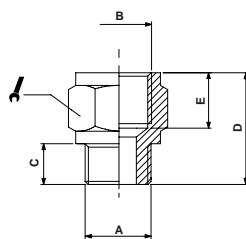
**Арт. 104S**

Код	F	F1	H	H1		
104S1418	1/4	1/8	8	7	6	100
104S3814	3/8	1/4	9	7	8	100
104S1238	1/2	3/8	10	9	10	100
104S3412	3/4	1/2	14	11	12	100
104S0134	1"	3/4	20	12,5	17	100



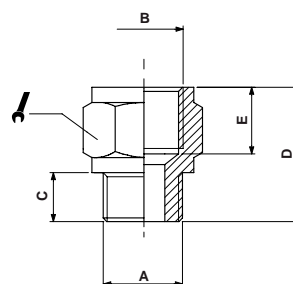
**Арт. 105**

Код	A	B	C	D	E		
1051818	R1/8	G1/8	8,0	18,0	8,0	14	100
1051814	R1/8	G1/4	8,0	21,5	11,0	17	100
1051838	R1/8	G3/8	8,0	22,5	11,5	22	50
1051414	R1/4	G1/4	11,0	24,5	11,0	17	100
1051438	R1/4	G3/8	11,0	24,5	11,5	22	50
1051412	R1/4	G1/2	11,0	29,0	14,0	24	50
1053838	R3/8	G3/8	11,5	26,0	11,5	22	50
1053812	R3/8	G1/2	11,5	29,5	14,0	24	25
1051212	R1/2	G1/2	14,0	32,0	14,0	26	25
1051234	R1/2	G3/4	14,0	35,0	16,5	32	10
1051201	R1/2	G1	14,0	37,0	18,0	38	10



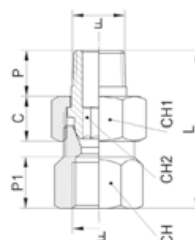
**Арт. 105Z**

Код	A	B	C	D	E		
105ZM518	M5	G1/8	4	14,5	8,0	14	100
105ZM618	M6	G1/8	6	16,0	8,0	14	100
105Z1818	G1/8	G1/8	6	16,0	8,0	14	100
105Z1814	G1/8	G1/4	6	19,5	11,0	17	100
105Z1838	G1/8	G3/8	6	20,5	11,5	22	50
105Z1414	G1/4	G1/4	8	21,5	11,0	17	100
105Z1438	G1/4	G3/8	8	22,5	11,5	22	50
105Z1412	G1/4	G1/2	8	26,0	14,0	24	50
105Z3838	G3/8	G3/8	9	23,5	11,5	22	50
105Z3812	G3/8	G1/2	9	27,0	14,0	24	25
105Z1212	G1/2	G1/2	10	28,0	14,0	26	25
105Z1234	G1/2	G3/4	10	30,0	16,5	32	10



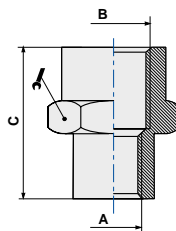
**Арт. 105P3**

Код	F	CH	CH1	CH2	P	P1	L	C	Gr	
10518P3	1/8	14	15	5	9,0	10,0	30,5	8,5	19,0	50
10514P3	1/4	17	19	6	12,0	12,0	37,0	9,5	39,0	50
10538P3	3/8	21	22	8	12,0	12,0	40,0	10,0	68,0	25
10512P3	1/2	25	27	12	15,0	15,0	48,0	12,0	118,0	10



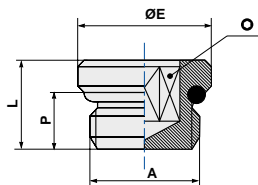
**Арт. 106**

Код	A	B	C		
106M518	M5	G1/8	13,5	14	100
1061814	G1/8	G1/4	19,0	17	100
1061838	G1/8	G3/8	20,0	22	25
1061812	G1/8	G1/2	24,0	26	50
1061438	G1/4	G3/8	23,0	22	50
1061412	G1/4	G1/2	25,0	26	50
1063812	G3/8	G1/2	27,5	26	25
1061234	G1/2	G3/4	30,0	32	10



**Арт. 107**

Код	A	P	L	ØE	Ø	
107M5	M5	4,0	5,5	8	2,5	100
10718	G1/8	5,5	7,5	14	4,0	100
10714	G1/4	6,5	8,5	17	6,0	100
10738	G3/8	7,5	10,5	20	8,0	100
10712	G1/2	9,0	12,0	24	10,0	50
10734	G3/4	15,0	20,0	32	12,0	10



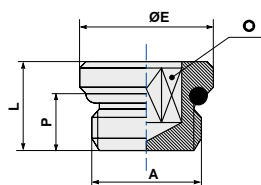
ГИДРАВЛИЧЕСКОЕ ОБОРУДОВАНИЕ

ПНЕВМАТИЧЕСКОЕ ОБОРУДОВАНИЕ



СИСТЕМЫ СМАЗКИ

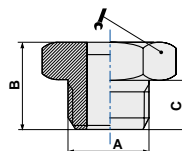
**Арт. 107P**

Код	A	P	L	ØE		
107P18	G1/8	5,3	8,2	14	4	100
107P14	G1/4	6,5	9,2	18	6	100




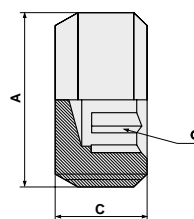
**Арт. 107Z**

Код	A	B	C		
107Z18	G1/8	10,5	6	14	100
107Z14	G1/4	13,0	8	17	100
107Z38	G3/8	14,0	9	19	50
107Z12	G1/2	15,5	10	24	50
107Z34	G3/4	16,5	11	30	25
107Z01	G1"	19,0	13	38	10





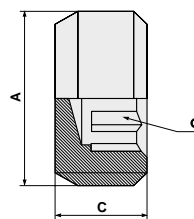
**Арт. E100**

Код	A	C		
E10018	R1/8	8	5	100
E10018L5	R1/8	5	5	100
E10014	R1/4	10	6	100
E10038	R3/8	11	8	50
E10012	R1/2	13	10	50





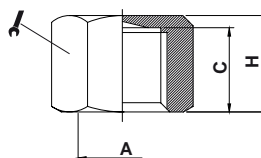
**Арт. E200**

Код	A	C		
E20018	G1/8	8	5	100
E20014	G1/4	10	6	100
E20038	G3/8	11	8	50
E20012	G1/2	13	10	50





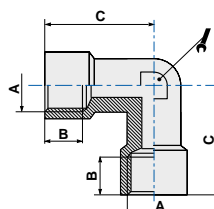
**Арт. 108**

Код	A	C	H		
10818	G1/8	8,0	10,0	14	100
10814	G1/4	11,0	13,5	17	100
10838	G3/8	11,5	14,0	20	50
10812	G1/2	14,0	16,5	24	50





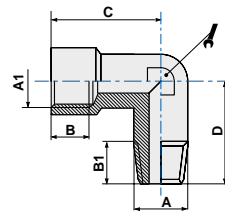
**Арт. 109**

Код	A	B	C		
10918	G1/8	7	20,0	10	100
10914	G1/4	8	25,5	13	50
10938	G3/8	10	29,0	17	25
10912	G1/2	11	35,0	20	10
10934	G3/4	16	36,0	25	5
10901	G1"	19	44,0	30	5





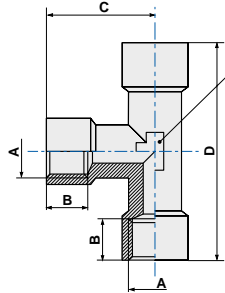
**Арт. 110**

Код	A	A1	B	B1	C	D		
110M5	M5	M5	4	-	11,0	11,5	9	100
11018	R1/8	G1/8	7	8	20,0	19,0	10	50
11014	R1/4	G1/4	8	11	25,5	24,0	13	50
11038	R3/8	G3/8	10	11,5	29,0	26,5	17	25
11012	R1/2	G1/2	11	14	35,0	31,5	20	20
11034	R3/4	G3/4	16	16	35,0	34,5	25	10
11001	R1'	G1'	19	16	44,0	51,0	30	5
11014F18M	R1/8	G1/4	8	8	25,5	23,0	13	50





**Арт. 111**

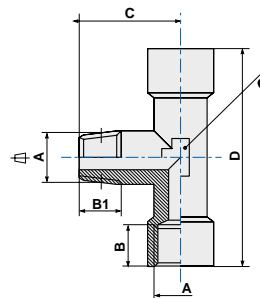
Код	A	B	C	D		
11118	G1/8	7	20,0	40	10	50
11114	G1/4	8	25,5	51	13	25
11138	G3/8	10	29,0	58	17	10
11112	G1/2	11	35,0	70	20	10
11134	G3/4	16	31,0	73	25	5
11101	G1'	19	49,5	90	30	5





**Арт. 112**

Код	A	B	B1	C	D		
11218	1/8	7	8,0	19,0	40	10	50
11214	1/4	8	11,0	24,0	51	13	25
11238	3/8	10	13,6	26,5	58	17	25
11212	1/2	11	15,5	31,5	72	20	10
11234	3/4	16	15,0	31,0	73	25	5
11201	1'	19	16,0	38,0	90	30	5

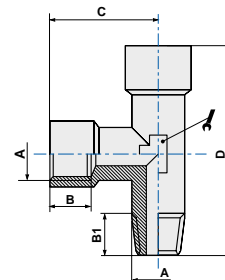
Резьба R (наружная), G (внутренняя)





**Арт. 113**

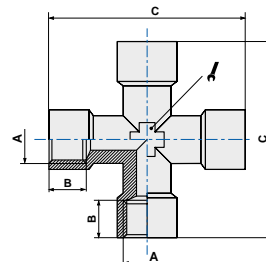
Код	A	B	B1	C	D		
11318	1/8	7	8,0	20	39	10	50
11314	1/4	8	11,0	25,5	49,5	13	25
11338	3/8	10	13,6	29,0	55,5	17	25
11312	1/2	11	15,5	35	65,0	20	10
11334	3/4	16	15,0	31	67,0	25	5
11301	1'	19	16,0	44	84,0	30	5

Резьба R (наружная), G (внутренняя)





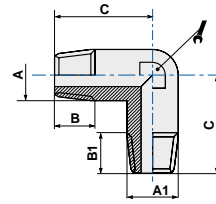
**Арт. 114**

Код	A	B	C		
11418	G1/8	7	40	10	25
11414	G1/4	8	51	13	25
11438	G3/8	10	58	17	10
11412	G1/2	11	72	20	5





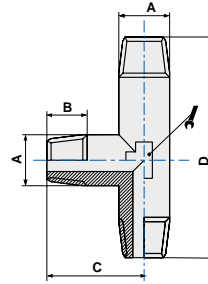
**Арт. 115**

Код	A	B	C	A1	B1		
11518	R1/8	8	19	G1/8	8	10	100
11514	R1/4	12,5	24	G1/4	12,5	13	50
11538	R3/8	13,6	26,5	G3/8	26,5	17	25
11512	R1/2	15,5	31,5	G1/2	15,5	20	25
11534	R3/8	15,0	35,5	G3/8	15	25	5
11501	R1"	16,0	51	G1"	51	30	5
1151814	R1/8	8	22	G1/8	12,5	13	100





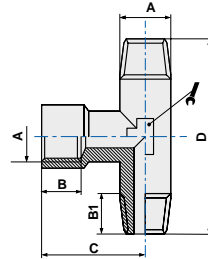
**Арт. 116**

Код	A	B	C	D		
11618	R1/8	8,0	19,0	38	10	100
11614	R1/4	12,5	24,0	48	13	50
11638	R3/8	13,6	26,5	53	17	25
11612	R1/2	15,5	31,5	63	20	10
11634	R3/4	15,0	35,5	66	25	5
11601	R1"	16,0	40,5	78	30	5





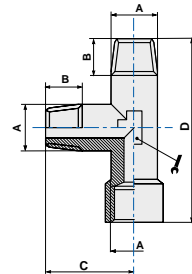
**Арт. 117**

Код	A	B	B1	C	D		
11718	1/8	7	8,0	20,0	38	10	100
11714	1/4	8	12,5	25,5	48	13	50
11738	3/8	10	13,6	29,0	53	17	25
11712	1/2	11	15,5	36,0	63	17	10
11734	3/4	16	15,0	34,5	66	25	5
11701	1"	19	16,0	46,5	78	30	5




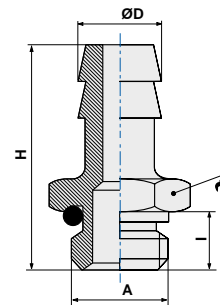
**Арт. 118**

Код	A	B	C	D		
11818	1/8	8,0	19,0	39,0	10	100
11814	1/4	12,5	24,0	49,5	13	50
11838	3/8	13,6	26,5	55,5	17	25
11812	1/2	15,5	31,5	67,5	20	10
11834	3/4	15,0	34,5	69,0	25	5
11801	1"	16,0	38,0	84,0	30	5



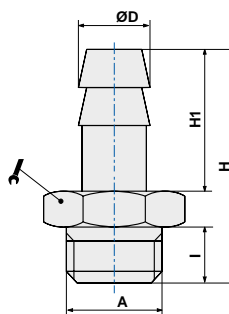
**Арт. 119**

Код	ØD	A	l	H	Ød		
11945M5	4,5	M5	4	31,5	2,2	11	100
1190718	7	G1/8	6	31,5	4	13	100
1190714	7	G1/4	8	34,0	4	16	100
1190818	8	G1/8	6	31,5	5,30	13	100
1190918	9	G1/8	6	31,5	5,5	13	100
1190914	9	G1/4	8	34,0	5,5	16	100
1190938	9	G3/8	9	35,0	5,5	17	50
1191014	10	G1/4	8	34,0	6	16	50
1191038	10	G3/8	9	35,0	6	17	50
1191214	12	G1/4	8	34,0	8	16	50
1191238	12	G3/8	9	36,0	8	17	50
1191212	12	G1/2	11	37,0	8	22	50
1191738	17	G3/8	9	36,0	11	17	50
1191712	17	G1/2	11	37,0	12	22	50



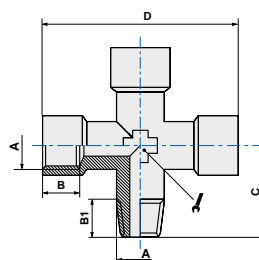
**Арт. 119Z**

Код	ØD	A	I	H	H1	Ød		
119Z04M5	4,5	M5	4	22,5	15,0	2	8	100
119Z0618	6	G1/8	6	29,5	19,0	3	12	100
119Z0614	6	G1/4	8	32,0	19,0	3	14	100
119Z0718	7	G1/8	6	29,5	19,0	4	12	100
119Z0714	7	G1/4	8	32,0	19,0	4	14	100
119Z0818	8	G1/8	6	29,5	19,0	5	12	100
119Z0814	8	G1/4	8	32,0	19,0	5	14	100
119Z0838	8	G3/8	9	33,0	19,0	5	19	100
119Z0918	9	G1/8	6	29,5	19,0	6	12	100
119Z0914	9	G1/4	8	32,0	19,0	6	14	100
119Z0938	9	G3/8	9	33,0	19,0	6	19	100
119Z0912	9	G1/2	10	35,5	19,0	6	24	25
119Z1018	10	G1/8	6	30,5	20,0	7	12	100
119Z1014	10	G1/4	8	33,0	20,0	7	14	50
119Z1038	10	G3/8	9	34,0	20,0	7	19	100
119Z1012	10	G1/2	10	36,0	20,0	7	24	50
119Z1214	12	G1/4	8	33,0	20,0	9	14	50
119Z1238	12	G3/8	9	34,0	20,0	9	19	50
119Z1212	12	G1/2	10	35,5	20,0	9	22	50
119Z1414	14	G1/4	8	33,0	20,0	10	14	25
119Z1438	14	G3/8	9	36,0	22,0	10,5	19	50
119Z1412	14	G1/2	10	37,5	22,0	10,5	22	50
119Z1638	16	G3/8	9	38,0	24,0	12	19	50
119Z1612	16	G1/2	10	38,0	22,0	12,5	24	25
119Z1738	17	G3/8	9	38,0	24,0	13	19	50
119Z1712	17	G1/2	10	39,5	24,0	13	22	50
119Z2012	20	G1/2	10	39,5	24,0	14	24	25
119Z2034	20	G3/4	10	39,5	24,0	16	24	25



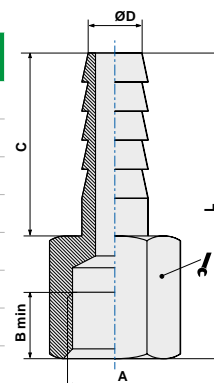
**Арт. 120**

Код	A	B	B1	C	D		
12018	1/8	7	8	19	40	10	25
12014	1/4	8	12.5	24	51	13	25
12038	3/8	10	13.6	26.5	58	17	10
12012	1/2	11	15.5	31.5	72	20	5



**Арт. 122**

Код	ØD	A	B	B1	C	D		
1220618	6	G1/8	8	19	28.5	3.5	12	100
1220718	7	G1/8	8	19	28.5	4.5	12	100
1220714	7	G1/4	11	19	31.5	4.5	15	100
1220814	8	G1/8	11	19	31.5	5.5	15	100
1220914	9	G1/8	11	19	31.5	6.5	15	100
1221038	10	G1/4	11.5	20	33	7.5	19	25
1221238	12	G3/8	11.5	20	33	9.5	19	25
1221212	12	G1/2	14	20	36	9.5	24	10





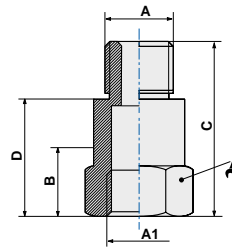
ГИДРАВЛИЧЕСКОЕ ОБОРУДОВАНИЕ

ПНЕВМАТИЧЕСКОЕ ОБОРУДОВАНИЕ



СИСТЕМЫ СМАЗКИ

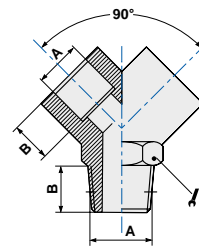
**Арт. 123**

Код	A	A1	B	C	D		
12318L22	G1/8	G1/8	6	22	16	14	100
12318L32	G1/8	G1/8	6	32	26	14	100
12318L42	G1/8	G1/8	6	42	36	14	100
12318L51	G1/8	G1/8	6	51	45	14	50
12314L28	G1/4	G1/4	8	28	20	17	50
12314L35	G1/4	G1/4	8	35	27	17	50
12314L51	G1/4	G1/4	8	51	43	17	25





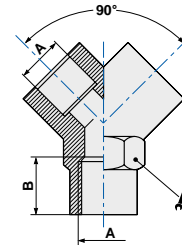
**Арт. 125**

Код	A	B		
12518	1/8	8,0	13	50
12514	1/4	11,0	17	25
12538	3/8	11,5	20	25
12512	1/2	14,0	25	10






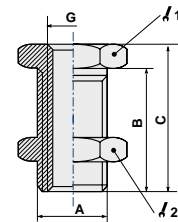
**Арт. 126**

Код	A	B		
12618	G1/8	8	13	50
12614	G1/4	11	17	25
12638	G3/8	11	20	25
12612	G1/2	14	25	10




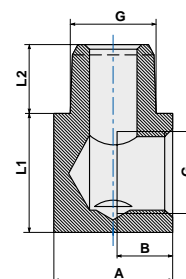
**Арт. 127**

Код	G	A	B	C			
127M5	M5	M10x1,0	10,5	14	14	14	100
12718	G1/8	M16x1,5	14,0	18	22	19	50
12714	G1/4	M20x1,5	21,0	24	27	24	25
12738	G3/8	M26x1,5	21,0	26	32	30	25
12712	G1/2	M28x1,5	27,0	33	36	32	10




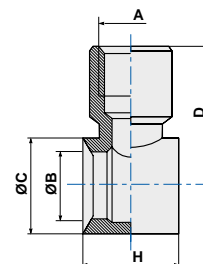
**Арт. RLB100**

Код	G	A	B	L1	L2	
RLB100M5	M5	9	4,5	9	4,5	100
RLB10018	1/8	14	6,5	14	8	100
RLB10014	1/4	18	9	18	10	100
RLB10038	3/8	19	11	19	11,5	50



**Арт. 412**

Код	A	G*	ØB	ØC	D	H	
41218	G1/8	G1/8	9,9	14	20	15	50
41214	G1/4	G1/4	13,3	18	24	17	50
41238	G3/8	G3/8	16,8	21	28,5	20	25



\*присоединение пустотелого болта